



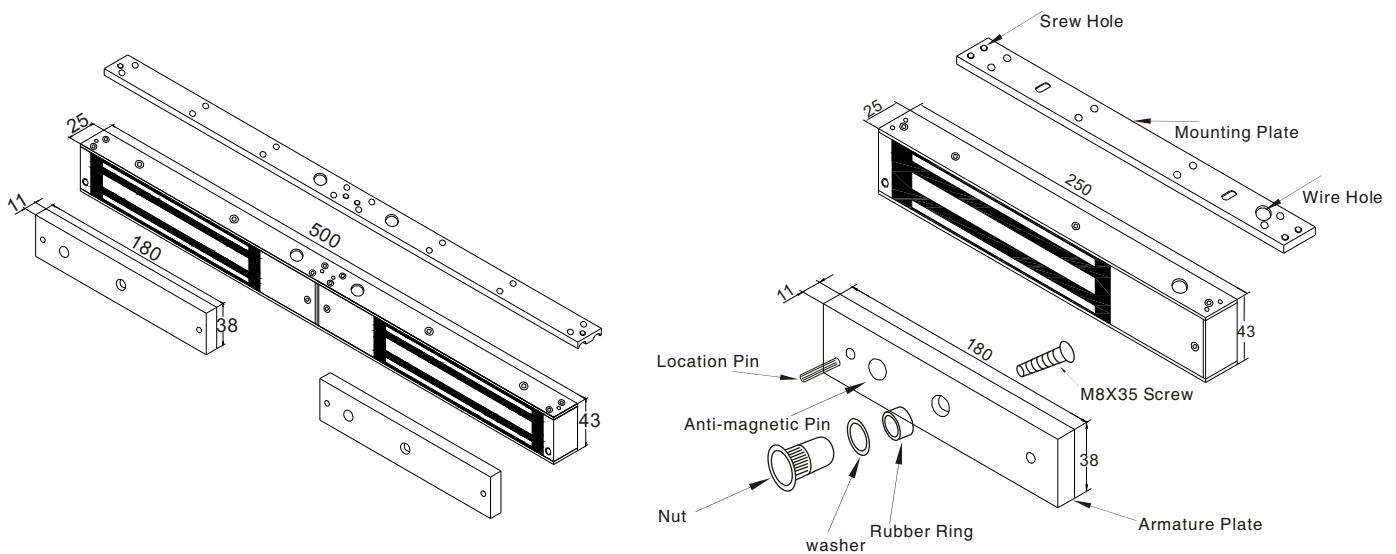
280kg Magnetic Lock

# 280kg Magnetic Lock Manual

## Specification

| Model           | Size(unit:mm)  | Voltage  | Current                    | Holding Force     | Lock Signal | Door Signal           | Door        |
|-----------------|----------------|----------|----------------------------|-------------------|-------------|-----------------------|-------------|
| YM-280          | 250Lx48.5Wx25H | 12/24VDC | 12V/500mA<br>24V/250mA     | 280kg(600Lbs)     | No          | No                    | Single Door |
| YM-280D         | 500Lx48.5Wx25H | 12/24VDC | 12V/500mAx2<br>24V/250mAx2 | 280kgx2(600Lbsx2) | No          | No                    | Double Door |
| YM-280(LED)     | 250Lx48.5Wx25H | 12/24VDC | 12V/500mA<br>24V/250mA     | 280kg(600Lbs)     | Yes         | No                    | Single Door |
| YM-280(LED)-DS  | 250Lx48.5Wx25H | 12/24VDC | 12V/500mA<br>24V/250mA     | 280kg(600Lbs)     | Yes         | NO(B),NC(R)<br>COM(Y) | Single Door |
| YM-280D(LED)    | 500Lx48.5Wx25H | 12/24VDC | 12V/500mAx2<br>24V/250mAx2 | 280kgx2(600Lbsx2) | Yes         | No                    | Double Door |
| YM-280D(LED)-DS | 500Lx48.5Wx25H | 12/24VDC | 12V/500mAx2<br>24V/250mAx2 | 280kgx2(600Lbsx2) | Yes         | NO(B),NC(R)<br>COM(Y) | Double Door |
| YM-280T(LED)    | 250Lx48.5Wx25H | 12/24VDC | 12V/500mA<br>24V/250mA     | 280kg(600Lbs)     | Yes         | No                    | Single Door |
| YM-280TD(LED)   | 500Lx48.5Wx25H | 12/24VDC | 12V/500mAx2<br>24V/250mAx2 | 280kgx2(600Lbsx2) | Yes         | No                    | Double Door |

## Diagram(unit:mm)



### ⚠ Remark:

A: Please Don't Fix The Screw(screw of Armature Plate) Tightly,  
Let The Rubber Ring Maintain Proper Elasticity.

B: Please Check The Jumper Position, to Know Voltage is 12VDC or 24VDC.



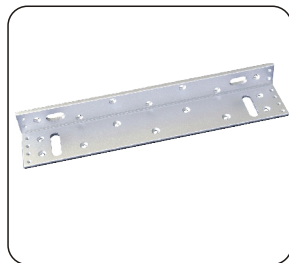
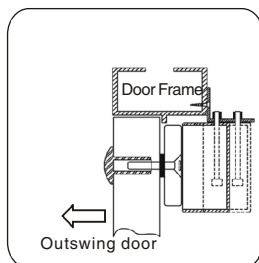
280kg Magnetic Lock

## Bracket Installation

Different brackets are available according to different types of doors. For example, narrow door, frameless glass door and inward opening door.

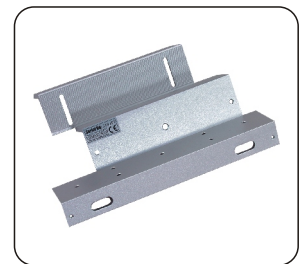
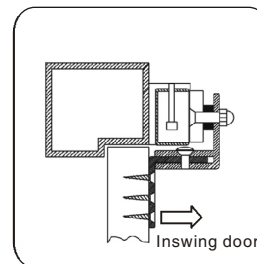
### L Bracket

When the door frame thickness is less than 42mm, need to install the L bracket.



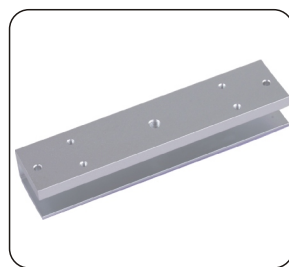
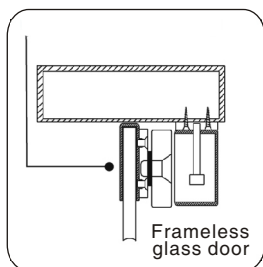
### ZL Bracket

For inward opening door, need to install the ZL bracket.



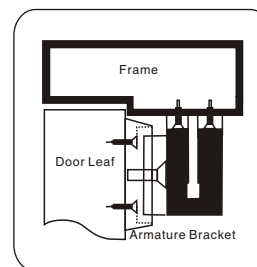
### U Bracket

For the frameless glass door, need to install the UL bracket. (suitable for 10-15mm glassdoor).



### I Bracket for Amature Plate

When the door frame is too thick, need to install the I bracket.





## 280kg Magnetic Lock

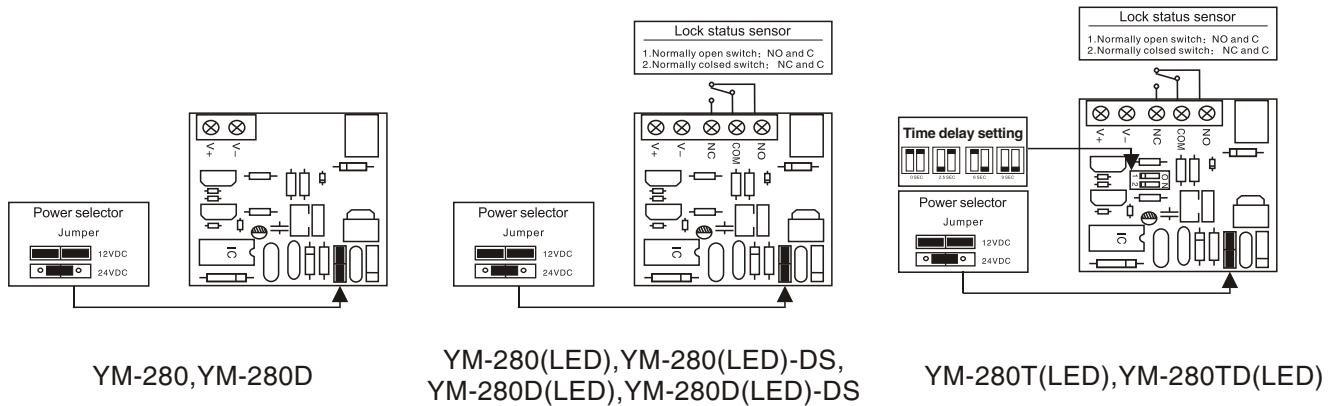
### Circuit Board Diagram

#### A. 12VDC Input:

Required power 0.5Amp(Minimum).  
 Connect the positive(+)lead from a 12VDC power source to V +.  
 Connect the ground(-)lead from a 12VDC power source to V -.  
 Check jumper for 12 VDC operation.

#### B. 24VDC Input:

Required power 0.25Amp(Minimum).  
 Connect the positive(+)lead from a 24VDC power source to V +.  
 Connect the ground(-)lead from a 24VDC power source to V -.  
 Check jumper for 24 VDC operation.



### Wire Connection

